

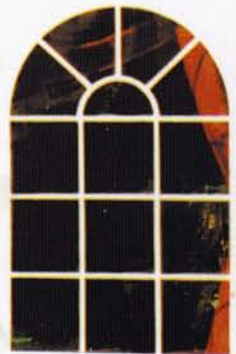


*a lasting*

Memory



A tailor made service

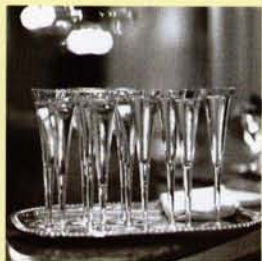


**NORTH of SCOTLAND  
MARQUEES**

UNIT 15C  
BALMAKEITH INDUSTRIAL ESTATE  
NAIRN SCOTLAND IV12 5QW  
TELEPHONE: (01667) 455116  
FAX: (01667) 454010  
[www.northofscotlandmarquees.com](http://www.northofscotlandmarquees.com)



INVESTOR IN PEOPLE



*Special events are not a daily  
occurrence but when they are over it is  
the memories that linger.*

# Memories



*that linger*



We recognise that it is the contrast between ordinary and special days, that helps create a lasting and precious memory. One that we can always pull out on a dreary winter's day to help keep us warm inside.

## WEDDINGS, PARTIES & SPECIAL CELEBRATIONS

It takes more than just artistry to create exactly the right experience, and we have worked tirelessly over the years to perfect our services (a little bit of magic always helps). That is what makes all the difference between a mediocre event and a truly memorable occasion.



# *Attention*

A magical Atmosphere



*With careful planning and attention to every last detail, we work in close consultation with you, to help create the essential elements of a relaxed mood and a magical atmosphere, for your ideal memories.*



A Professional Approach

## CORPORATE

The quality of client hospitality will often determine the fate of that one incredible deal that is critical in cementing a long-term profitable partnership.

Equally important is the entertaining and relaxation of important key clients, VIP, and dignitaries, who will then be swayed in favour of your company products or services.

Whether it is the full ceremonial or the corporate fun day, we are geared to producing a tailor made service that will suit your exacting requirements.

*to detail*





**NORTH of SCOTLAND  
MARQUEES**

*Our Philosophy*

Excellence should be a foregone expectation.  
Our customer promise is to provide  
unforgettable memories.

Your event is special for you and is therefore special for us.  
We consider ourselves part of your team, with your aims  
and purposes in mind and we promise to work tirelessly  
to deliver them.



A member of Area Marquee Hire  
[www.area-marqueehire.co.uk](http://www.area-marqueehire.co.uk)



# A lasting *memory*



*With careful planning and attention to every last detail, we work in close consultation with you, to help create the essential elements of a relaxed mood and a magical atmosphere, for your ideal memories.*

## *Blue & White* Marquee Range

These marquees are suitable for a variety of occasions and fit in well to brighten up a lively party atmosphere. The Marquees come in various shapes & sizes, with a variety of special attachments, such as canopies, vestibules, solid doors etc, and are highly adaptable to the setting.

*A tailor-made service*



# A lasting memory

With careful planning and attention to every last detail, we work in close consultation with you, to help create the essential elements of a relaxed mood and a magical atmosphere, for your ideal memories.



## *Multi-Span Marquee Range*

These marquees are for suitable occasions where access around the periphery is vital. The Multi-Span Marquee structure does not require struts and guy ropes allowing greater freedom of movement in and around the unit. There are also available, a variety of special attachments, such as canopies, vestibules, solid doors, etc.



*A tailor-made service*

# Marquee *Interior Lining* Range



For those very special occasions the atmosphere within may be further enhanced by the selection of a variety of beautiful linings and colour options. Selected areas of the marquee can be split into zones in this way allowing for different atmospheres under one roof.

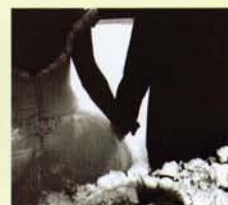


*A lasting  
memory*



With careful planning and attention to every last detail, we work in close consultation with you, to help create the essential elements of a relaxed mood and a magical atmosphere, for your ideal memories.

*A tailor-made  
service*





# Marquee *Special Effects* Range

For enhancing even further the atmosphere to create a special mood.

A wide range of lighting effects are available ranging from subtle up-lighters, part or full starlight roof lining through to disco lighting.



## A lasting memory

With careful planning and attention to every last detail, we work in close consultation with you, to help create the essential elements of a relaxed mood and a magical atmosphere, for your ideal memories.

*A tailor-made service*



## TERMS AND CONDITIONS OF HIRE

1 **CONDITIONS.** The Company will submit a written quotation which the Hirer shall accept in writing; the absence of such written quotation of acceptance however shall not invalidate the Contract, and all work quoted for and undertaken by, or goods hired from the Company shall be subject to these terms and conditions and the Hirer by authorising or allowing work to proceed or goods to be delivered is deemed to have confirmed the Contract and to have accepted these terms and conditions.

2 **PERIOD OF HIRE.** The period of hire is understood to mean the period for which the tentage or equipment is required to be ready and available for use.

3(1) **CONDITIONS OF SITE.** The Company's quotation for hire charges is made on the assumption that the site on which the tents or equipment are to be erected or to be delivered is:

(a) flat level ground with easy access for heavy motor transport and

(b) has no drains, pipes, cables or other service buried beneath the surface or otherwise concealed.

If the said site does not comply with these requirements the Company may in its discretion either rescind the Contract by giving oral or written notice to the Hirer or make additional charges. The Company shall not be liable to the Hirer for any loss, damage or expense resulting from such rescission of the Contract.

3(11) **EXCLUSION OF COMPANY'S LIABILITY FOR DAMAGE TO SITE AND SERVICES.** Whether the said site complies with the following requirements or not the Company shall not be under any liability whatsoever to make good any damage to drains, pipes or cables or other services buried under the site or otherwise concealed or any consequential loss resulting from such damage unless an accurate plan showing the precise position of such drains, pipes or cable or other services shall have been supplied to the Company.

3(111) **THE POSITION OF TENTS AND EQUIPMENT.** The Hirer shall provide the Company with a plan showing the position which the tents or equipment shall be erected or alternatively shall have a representative on the site for that purpose. If the Hirer shall fail to provide a plan or have a representative on the site the Company may erect the tents and equipment where it thinks fit and shall be deemed to have performed the Contract.

4 **VARIATION OF HIRE CHARGES.** The Company reserves the right to vary the quoted hire charges in the event of any increase taking place before or during the period of hire in the cost of labour, materials or transport.

5 **HIRE CHARGES.** All goods hired are charged whether used or not. Goods collected by customers will be charged extra if not returned on day arranged.

The Hire charges published in any of the Company's printed matter are for guidance of Hirers in estimating costs only and do not constitute an offer.

6 **PAYMENT.** Payment must be made as stated in the Company's quotation. The Company reserve the right (a) to charge a deposit to cover part or the whole of the value of the property and equipment hired, and (b) should settlement not be effected within 30 days of the termination of the hire period to charge interest on the hire charge at the rate of 3 per cent in excess of the current bank rate, such interest to accrue from the date of the expiration of the thirty-days period mentioned above. No receipt will be recognised unless given on the Company's own official receipt form.

7 **LOSS OR DAMAGE** The Hirer is wholly responsible for all equipment on hire from the time of delivery until collection. He will be responsible for the safe custody of the Company's property on the site and will make good to the Company all loss or damage to the Company's property or equipment hired or used on the site (other than fair wear and tear) such as breakages, crockery and glass etc. including those due to theft or burglary, unless it be proved that such loss or damage was caused by faulty material or workmanship or negligence on the part of the Company. No guarantee can be given that equipment will be removed the following day, we will do our best to meet the wishes of our clients whenever possible. We cannot accept any items in place of our own.

8 **LIABILITY TO THIRD PARTIES.** The Company will not be responsible for and the Hirer will indemnify the Company against all claims for injury to persons or loss or damage to property howsoever caused unless it be proved that such injury or damage be caused by faulty material or workmanship or negligence on the part of the Company.

10 **ATTENDANCE.** The Hire charges do not include attendance by the Company's men except during actual processes of erection and dismantling.

11 **PERMITS.** The Hires is responsible for giving notice to or obtaining all necessary permits from any authorities who are or may be concerned and must make application where necessary to the Planning Authority, District Surveyor, Police, Fire Brigade and any similar authority or organisation. Any cost incurred in delays or modification in the work arising from the absence of or misrepresentation of all such necessary permission or permits shall be payable to the Company Hires and shall be deemed to be part of the Hire charge for the purpose of Clause 6 thereof.

12 **FORCE MAJEURE.** While every effort will be made by the Company to carry out any order accepted, the full performance of it is subject o variation or cancellation by the Company consequent upon Act of God, War, Strikes, Riots, Lock-outs or other labour disturbances, cause beyond the Company's control.

13 **MODIFICATION OF CONTRACT.** No verbal representations are recognised by the Company and these terms and conditions shall only be modified by a supplementary written contract. Verbal modification will not be accepted from the Hirer.

14 **CANCELLATION OR PREMATURE TERMINATION OF CONTRACT.** In the event of the Hirer desiring to cancel the contract after a firm order has been placed, if the cancellation date is 30 days prior to the delivery date, there will be a charge of 25 per cent of the hire charge, if the cancellation is 5-30 days prior to delivery date, the charge will be 50 per cent of the hire charge, and if the cancellation is less than 5 days prior to delivery date, full hire charge will be made.

15 **CHARGES FOR DEFICIENCIES CAN BE OBTAINED ON APPLICATION TO THE HIRE OFFICE.**

16 **ANY CONTRACT TO FOLLOW HEREIN SHALL BE CONSTRUED IN AND GOVERNED BY NON-EXCLUSIVE JURISDICTION OF THE SCOTTISH COURTS.**